

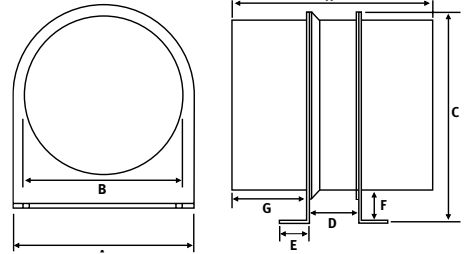
VENTILATION / FANS

HYPER 6" (150MM) AXIAL FAN



Code: SEC0634
6" (150mm) Round

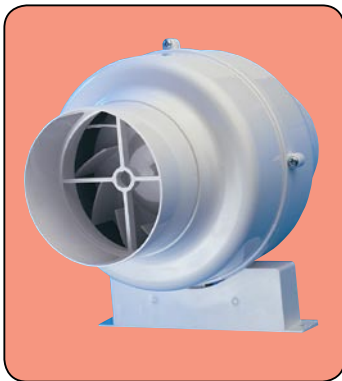
A = 173mm
B = 147mm
C = 180mm
D = 52mm
E = 25mm
F = 22mm
G = 70mm
H = 200mm



- 150mm (6") Duct Collars
- Unique design
- Quality ballbearing motor
- Integral mounting system
- High performance axial fan
- Guaranteed 2 years
- 3 pin plug attached

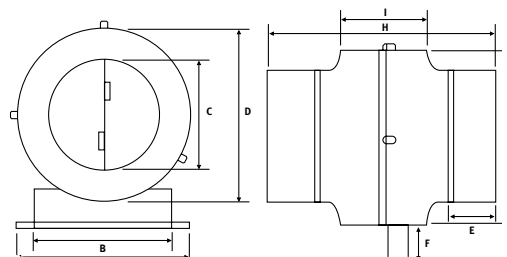
ORDER CODE	SEC0634
SIZE	150mm (6")
DESCRIPTION	Hyper 150
PERFORMANCE	89 l/s (max)
PRICE	

MANROSE CFD MODEL FAN



Code: SEC0326 / SEC0327
4" (100mm) Round

A = 154mm
B = 128mm
C = 98mm
D = 148mm
E = 50mm
F = 32mm
G = 180mm
H = 262mm
I = 110mm



- 100mm (4") Duct Collars.
- The CFD Fans can be fitted anywhere into the ducting system and installed in a vertical or horizontal position.
- Can either be operated by its own wall switch or can be connected to the light switch so that the fan will start when the light is switched on.
- Double insulated and therefore does not require an earth.
- Pre-set time delay switch for 1 minute run on available. Model SEC0327.

ORDER CODE	SEC0326/SEC0327 (with timer)
SIZE	100mm (4") (max)
DESCRIPTION	CFD Centrifugal Fan
PERFORMANCE	30 l/s
PRICE (with timer)	119.10
PRICE (without timer)	

All prices **DO NOT** include GST.

www.westaflex.com.au