

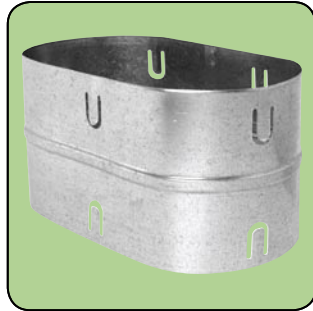
# FITTINGS

## JOINERS & S/COLLARS - POLY & METAL

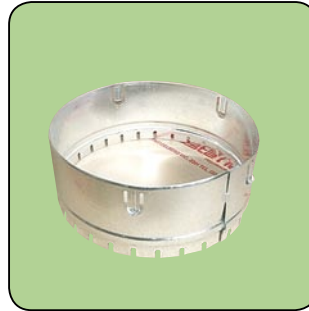
Code Prefix: 7160  
Poly Joiners



Code Prefix: 8116  
Metal Oval Joiner



Code Prefix: 8120  
Metal Castellated  
S/Collars



Code Prefix: 8110  
Metal Joiners



Code Prefix: 7165  
Poly Connector Plain

Code Prefix: 7166  
Poly Connector Insulated



Code Prefix: 8130  
Metal S/Collar with  
25mm Flange



### » CONSTRUCTION - POLY

- Manufactured from U.V stabilised High Density Polyethylene
- Smooth internal lines
- No sharp edges
- Positive lock duct tabs
- Insulation meets Australian Standard (AS) 1530 part 3

### » CONSTRUCTION - METAL

- Mechanically produced from galvanised steel to ensure a precise fit
- Positive lock duct tabs
- Insulation meets Australian Standard (AS) 1530 part 3
- **Sizes not listed, POA nett.**

METRIC SIZE	PRODUCT CODE	POLY JOINER	METAL JOINER	S/COLLAR CASTELLATED	S/COLLAR 25MM FLANGE	OVAL JOINER	POLY CONNECTOR PLAIN	POLY CONNECTOR INSULATED
100	04	N/A		N/A	N/A	N/A	N/A	N/A
125	05	N/A		N/A	N/A	N/A	N/A	N/A
150	06					N/A		
200	08							
250	10							
300	12							
350	14							
400	16							
450	18						N/A	N/A
500	20	N/A				N/A	N/A	N/A
550	22	N/A				N/A	N/A	N/A
600	24	N/A				N/A	N/A	N/A

All prices **DO NOT** include GST.

[www.westaflex.com.au](http://www.westaflex.com.au)